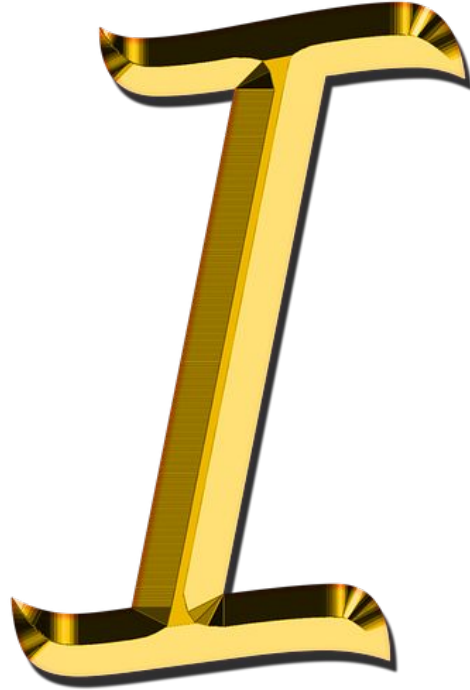
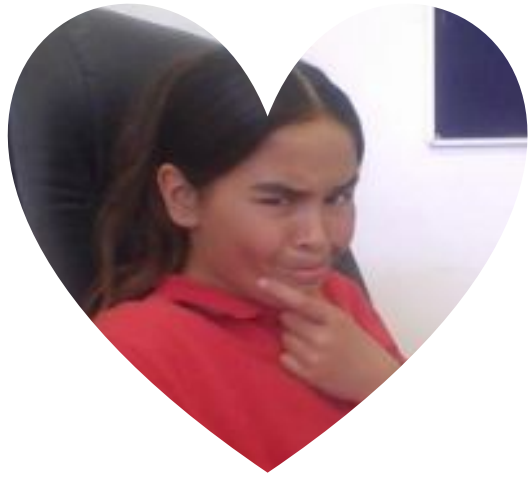


I AM AFFIRMATION

BY JASMINE













F • R • I • E • N • D • S









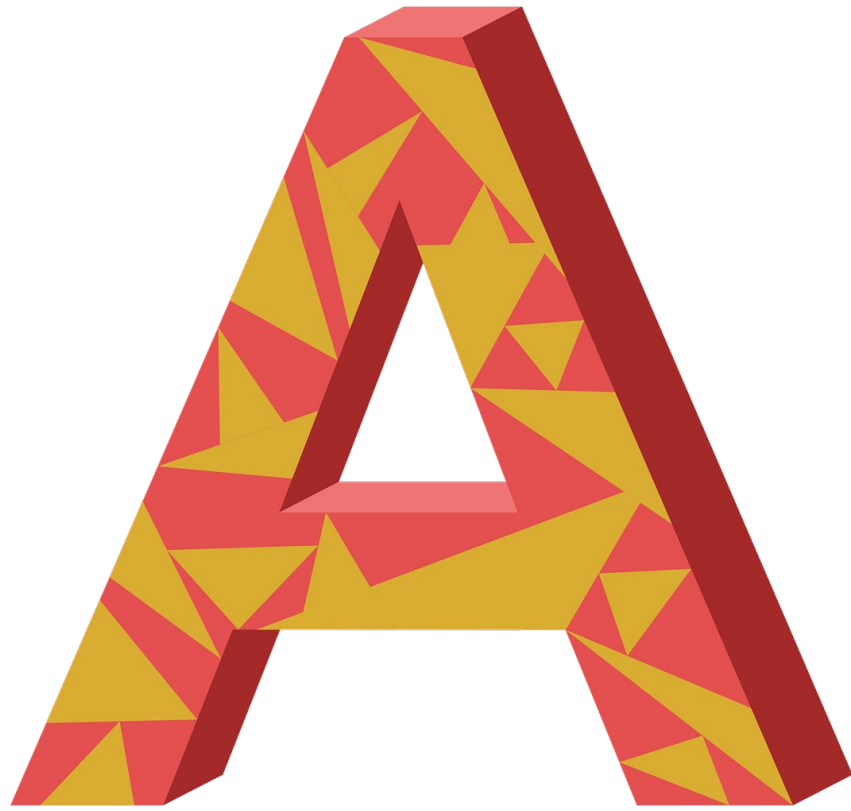


OF



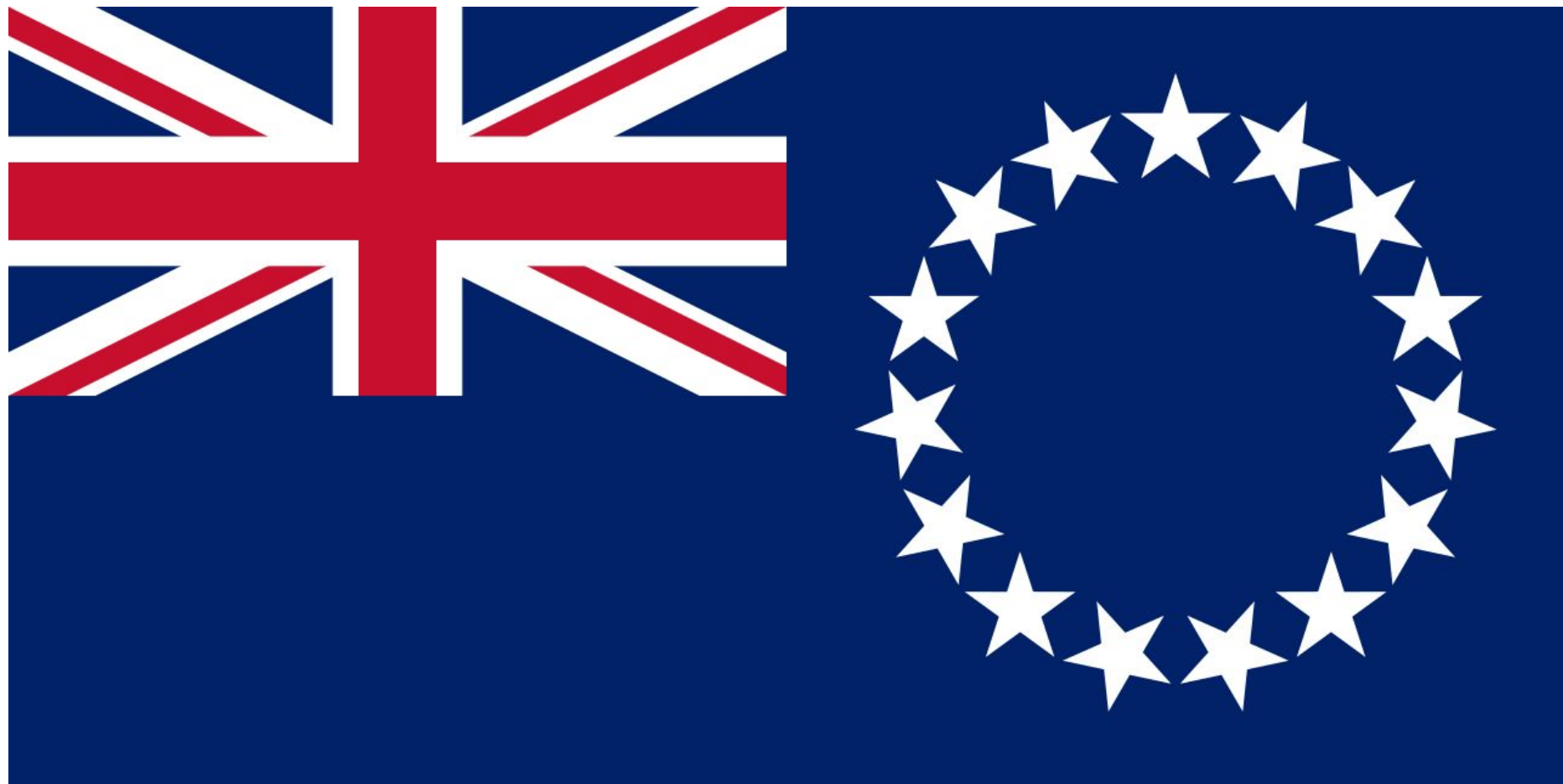






PROUD

The word "PROUD" is written in a bold, sans-serif font. Each letter is filled with a rainbow color gradient, starting with purple at the bottom, followed by teal, green, yellow, orange, and red at the top. The letters are spaced evenly across the image.











Sister.



THE HAPPIEST PEOPLE
DON'T NECESSARILY HAVE
THE BEST
OF EVERYTHING THEY
MAKE THE MOST OF.
EVERYTHING



LOVE < 3



2:45





BELIEVE



MYSELF





Strive

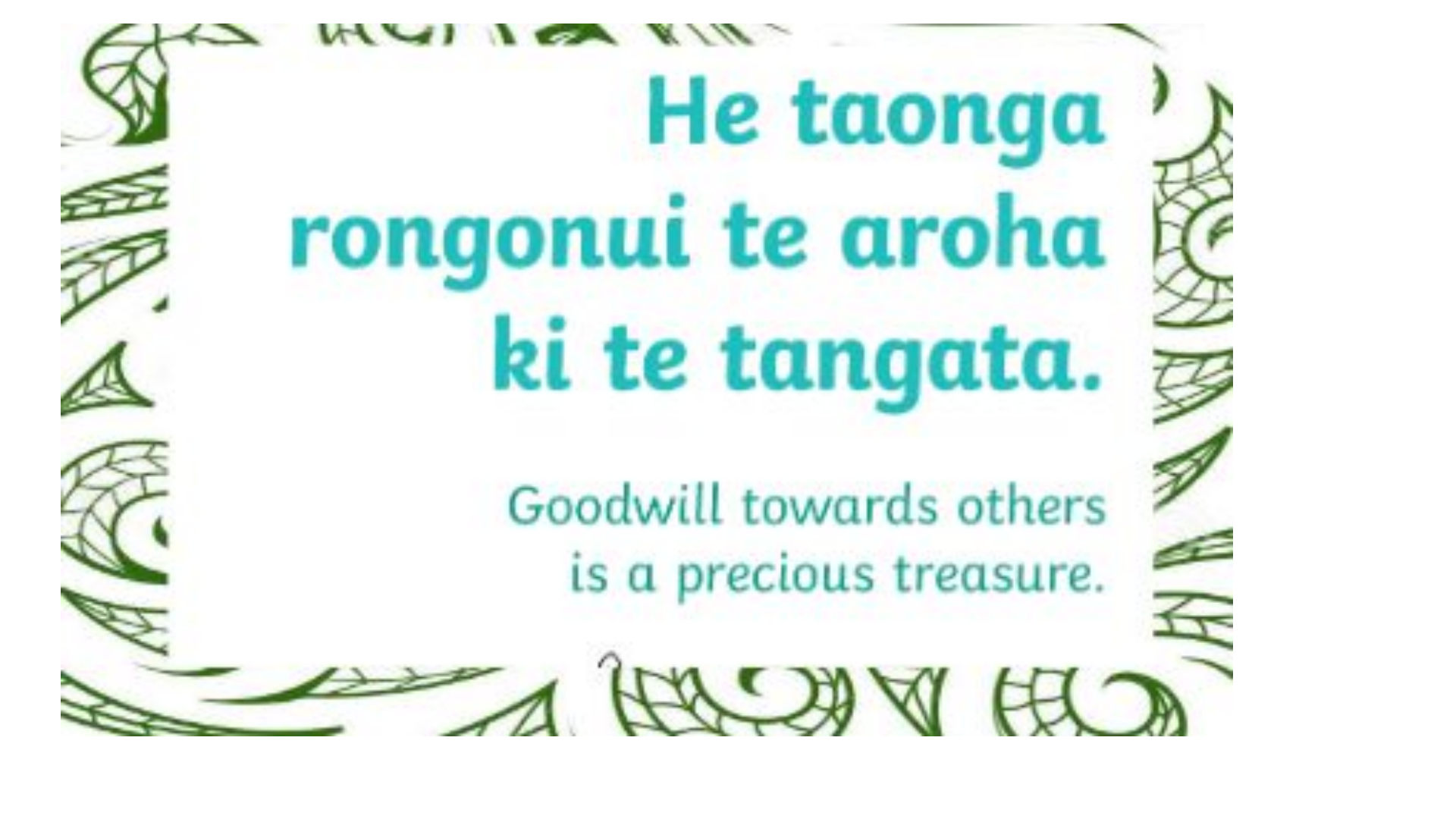


The word "Strive" is written in a black, elegant cursive font. To the left of the letter 'S' is a large, bright yellow five-pointed star with a subtle drop shadow. Behind the letters 't' and 'r' is a green starburst graphic consisting of several sharp, radiating lines.

FOR

The image features a dark, almost black, textured background that resembles asphalt or a similar granular surface. A thin, white rectangular border is centered horizontally and vertically, enclosing the word "success". The word is written in a clean, white, lowercase, sans-serif font. The lighting is subtle, with a slight glow around the text and the border, making them stand out against the dark, grainy background.

success



**He taonga
rongonui te aroha
ki te tangata.**

Goodwill towards others
is a precious treasure.



AM



The background of the image is the logo for Glen Taylor School. It is a circular emblem with a red outer border containing white triangles. Inside this is a dark blue ring with the school's name 'GLEN TAYLOR SCHOOL' at the top and the Māori motto 'Ka Tiwhiri Ka Rea' at the bottom. The center of the logo features a stylized blue and white design, possibly representing a flower or a traditional symbol.

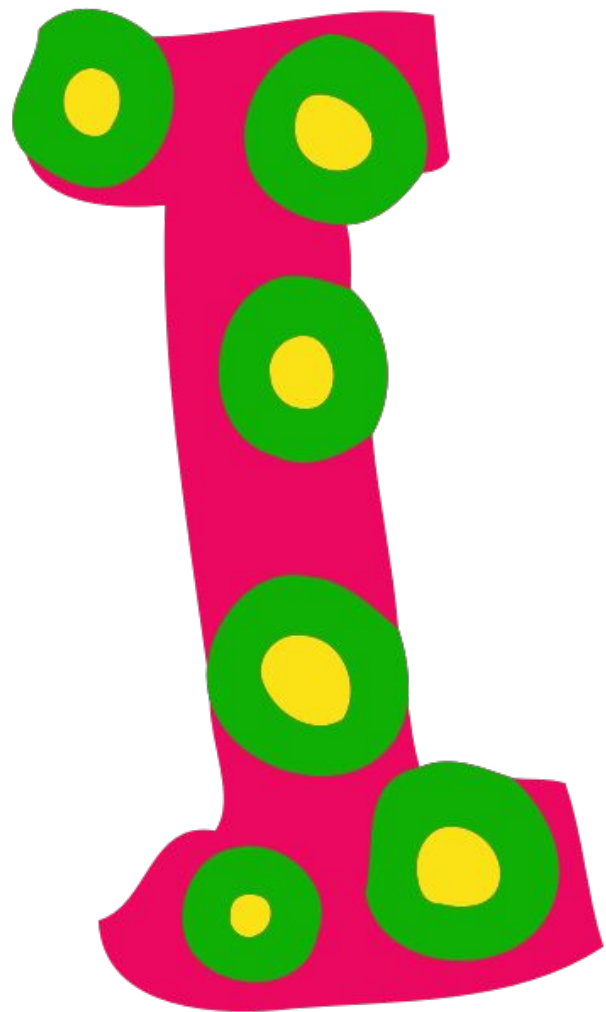
Students

Achieving with

Confidence

while Enjoying

there learning



A

conscientious
gentle
energetic
diligent
insightful
cooperative
collaborative
hardworking
persistent
determined
ambitious
motivated
productive
efficient
organized
detail-oriented
responsible
reliable
trustworthy
honest
integrity
ethical
compassionate
empathetic
kind
friendly
warm
open-minded
flexible
adaptable
creative
innovative
resourceful
problem-solver
team player
communicative
listener
supportive
encouraging
positive
optimistic
resilient
perseverant
dedicated
committed
loyal
discreet
discrete
discreet
discrete

m

appreciative
reverent
connected
dependable
sharing
grateful
knowledgeable
trustworthy
reliable
integrity
ethical
compassionate
empathetic
kind
friendly
warm
open-minded
flexible
adaptable
creative
innovative
resourceful
problem-solver
team player
communicative
listener
supportive
encouraging
positive
optimistic
resilient
perseverant
dedicated
committed
loyal
discreet
discrete
discreet
discrete

